

DMX512 Master CDW Wall Control Panel

SR-2201



Feature

- DMX512 Signal
- Glass Wall Touch Control
- CDW (all white color)
- White & black



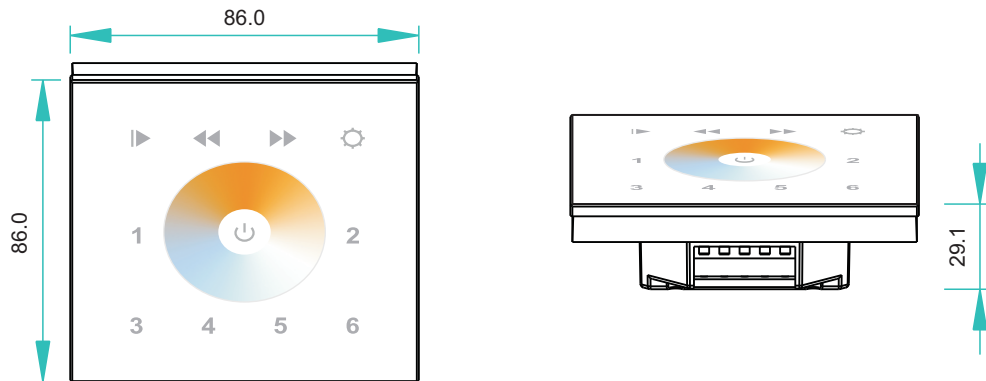
Parameter

Part No.	Input Voltage	Output	Size
SR-2201	12-24VDC	DMX512 Signal	86x86x29.1

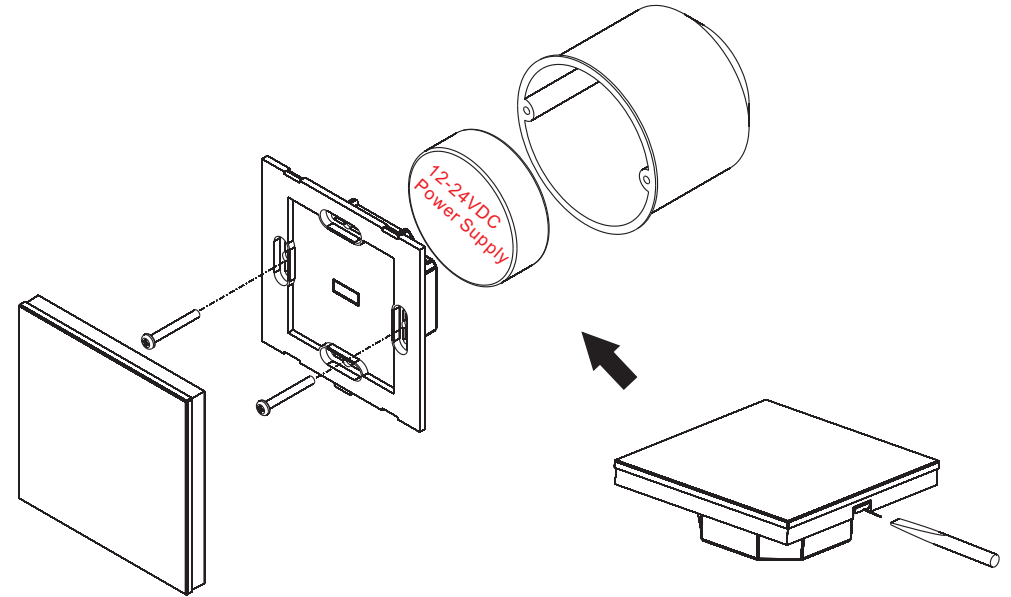
Corresponding DMX512 Decoder

Part No.	Input Voltage	Output Current	Output Power	Remarks
SR-2102B	12-36VDC	4x5A	4x(60-180)W	Constant voltage
SR-2102BEA	12-36VDC	4x8A	4x(96-288)W	Constant voltage
SR-2112B	12-36VDC	4x0.35A	4x(4.2-12.6)W	Constant current
SR-2114B	12-36VDC	4x0.7A	4x(8.4-25.2)W	Constant current
SR-2102BEA-RJ45	12-36VDC	4x8A	4x(96-288)W	Constant voltage

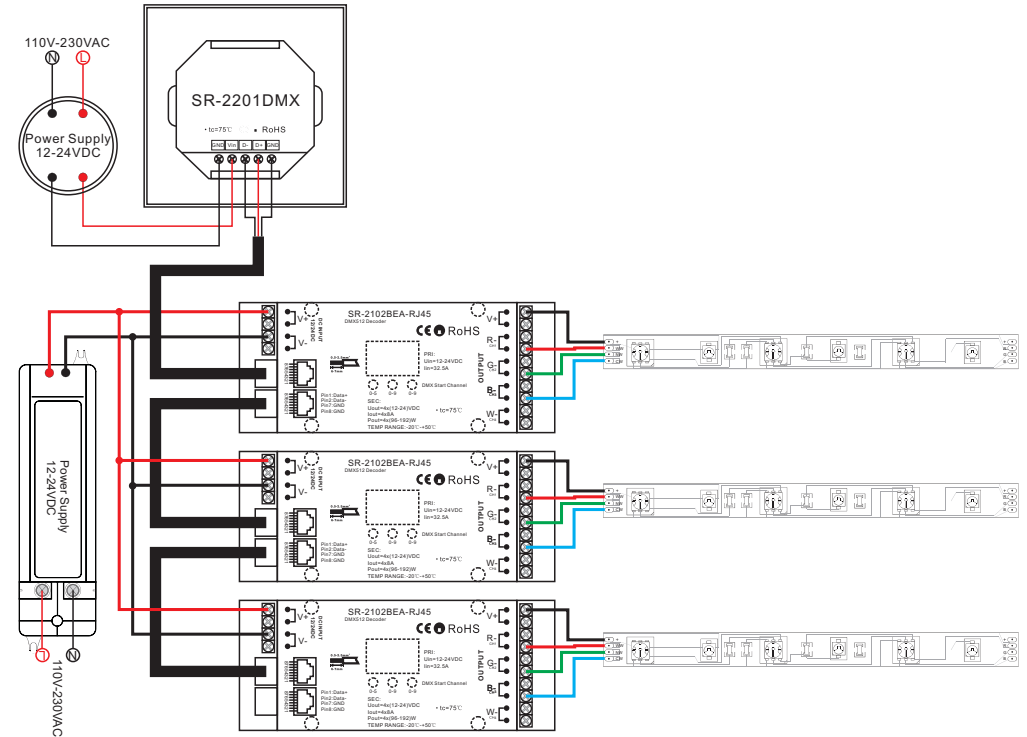
Product Size



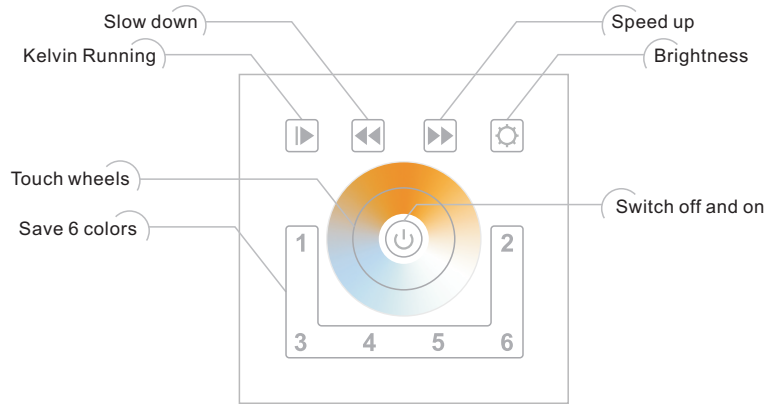
Installation



Wiring diagram



Operation




Operation

1. Set DMX Address

Set all DMX Decoder as DMX Address 001

2. Save color

- 1) Touch color wheel  to choose the color
- 2) Long press a target number over 3 seconds (light flashing means successfully saved, saving 1-6 colors will cover the original colors)

3. Default setting colors

Long press  to default settings as following colors.

- | | |
|----------------------|-------------------------------------|
| ① 100% Warm white | ② 50% warm white +50% cool white |
| ③ 100% Natural white | ④ 50% Natural white +50% cool white |
| ⑤ 100% Cool white | ⑥ 50% Cool white +50% warm white |

Safety & Warnings

- 1) The product shall be installed and serviced by a qualified person.
- 2) IP20. Please avoid the sun and rain. When installed outdoors, please ensure it is mounted in a water proof enclosure.
- 3) Always be sure to mount this unit in an area with proper ventilation to avoid overheating.
- 4) Please check if the output voltage of any LED power supplies used comply with the working voltage of the product.
- 5) Never connect any cables while power is on and always assure correct connections to avoid short circuits before switching on.
- 6) Please ensure that the cable is secured tightly in the connector
- 7) For update information please consult your supplier.

Warranty Agreement

- 1) We provide lifelong technical assistance with this product:

- 5-year warranty. We print date on every products, for example :1125 means year 2011, week 25. The warranty is for free repair or replacement and covers manufacturing faults only.
- For faults beyond the 3-year warranty we reserve the right to charge for time and parts.

2) Limited Warranty

- Any defects caused by wrong operation.
 - Any damages caused by unauthorized removal, maintenance, modifying, incorrect connection and replacement of chips.
 - Any damages due to transportation, vibration etc. after purchase.
 - Any damages caused by earthquake, fire, lightning, pollution and abnormal voltage.
 - Any damages caused by negligence, inappropriate storing at high temperatures and humidity or near harmful chemicals.
 - Product has been updated
- 3) Repair or replacement as provided under this warranty is the exclusive remedy to the customer.